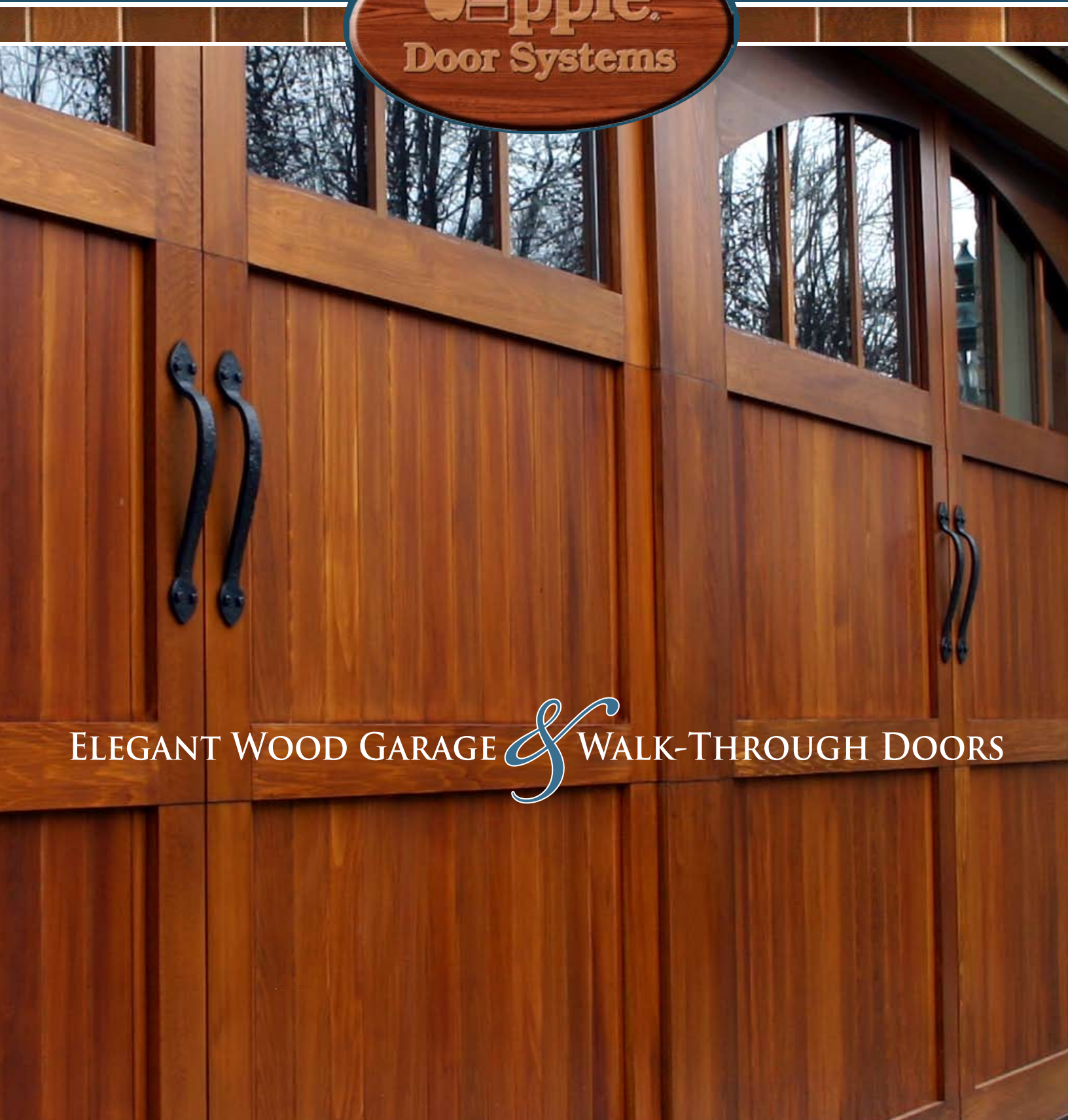


ARCHITECTURAL COMPATIBILITY.



ELEGANT WOOD GARAGE & WALK-THROUGH DOORS

THE MONUMENT COLLECTION

THE LUXURY OF GENUINE WOOD

At Apple Door Systems, we believe that homes are enhanced by the rich luxury of genuine wood products. That's why we offer not only beautiful wood garage doors in hundreds of designs, but also complementing walk-through doors that reflect the look of your garage doors. Choose from an impressive selection of window patterns, trim options, and classic styles that truly allow you to create a unique statement with your home.

It all begins with the natural beauty of clear grade Western Red Cedar, known for its rich grain and warm palette that ranges from light amber to deep honey brown. Elegantly textured, this high quality wood speaks of prestige and pride of ownership. In addition to its good looks, Western Red Cedar contains natural oils that help preserve the wood for years to come.

The Monument Collection offers a choice between the Afton, Kensington, Westham or Westham II series of garage doors. Select one of our many design options, or create your own. Both our garage and walk-through doors come in a wide assortment of styles, including curved or square tops, v-groove and beaded surfaces, and simple or elaborate window patterns that enhance your home's architectural design. Whether you want your doors to blend subtly into your home's facade, or stand out and make a bold statement, you have a broad selection of designs to choose from.

Swing Look



Swing Look, BCVN-231SCS

DISTINCTIVE
DESIGNS
FOR
DISTINCTIVE
HOMES



The classic split design of the Swing Look is reminiscent of swing-out doors from turn-of-the-century carriage houses, country homes, and cottages. Horizontal cross bucks, windows, and decorative hardware can add variety to the design.

Quad Look, QSVN-432SCG

**Beauty, performance,
and prestige in every door.**

The Monument Collection features:

- Clear grade Western Red Cedar which adds to the richness and look of the home.
- Premium operating hardware for safer, trouble-free operation.
- Construction with no exposed end grain, providing protection from rot by eliminating moisture build-up.
- A wide assortment of styles from curved and square tops to v-grooved and beaded surfaces and more.
- Additional options:
 - Patented simulated center post for double wide doors
 - Prefinishing
 - Decorative hardware
 - Windload certification



Swing Look, BCYN-432SCG

Sliding Look



Sliding Look, SSVN-811SCS w/5fm Post

Apple Door Systems Sliding Look reminds you of one-piece swing-up doors of the past. Windows are added to break up the strong vertical orientation of the design, creating the perfect complement to modern, traditional or rustic architecture.

Tri-Fold Look



Tri-Fold Look, TSVN-331SCS

Three-segment Tri-Fold Look doors appear to fold to the side as an accordion, but horizontal section breaks allow the doors to open upward. Optional half bucks and square or curved tops can add character to the design.

Quad Look

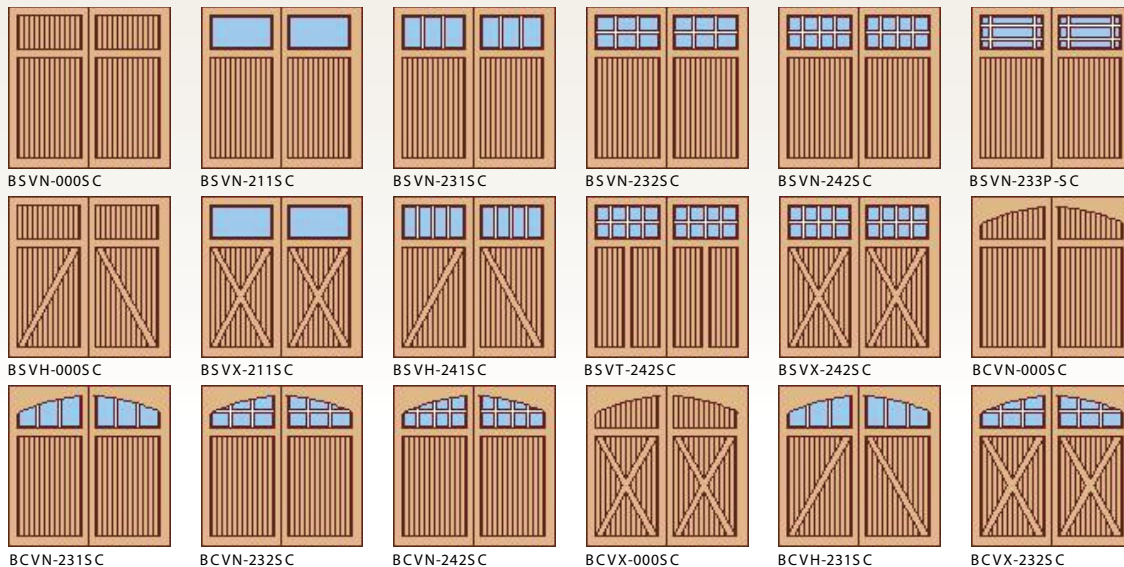


Quad Look, GSFN-422SCB

With their four-segment facade, Quad Look doors imitate the classic beauty and strength of bi-fold carriage doors. The choice of curved or square top looks provide greater variety in design, often balancing a home's architectural style.

MOST POPULAR DESIGNS

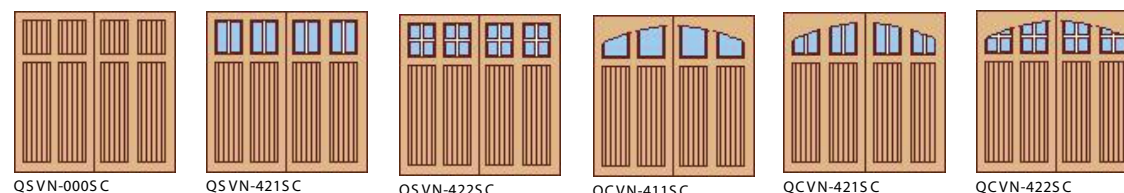
Swing Look



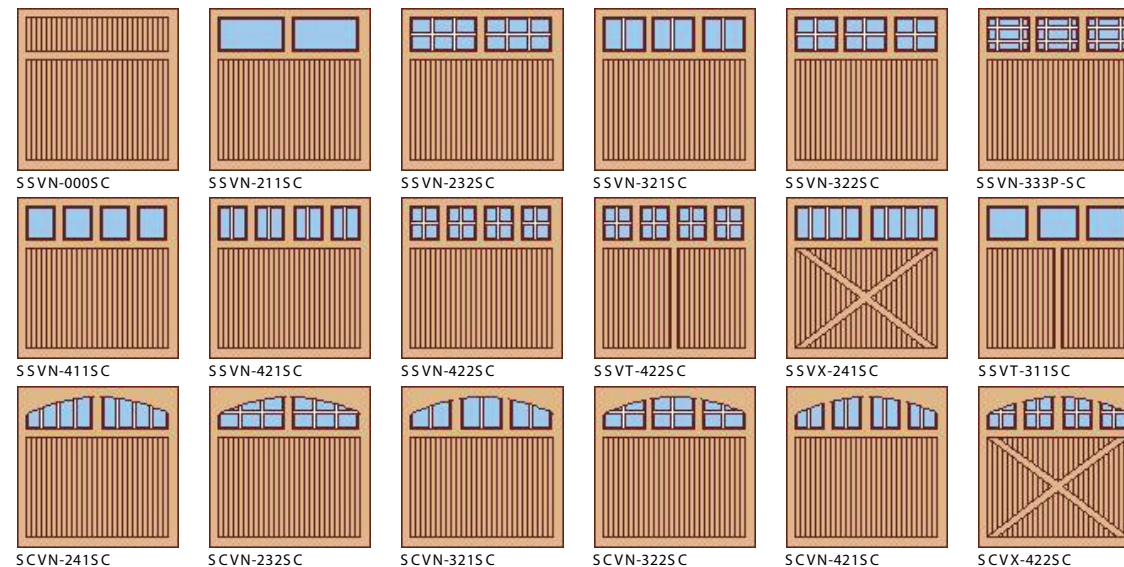
Tri-Fold Look



Quad Look



Sliding Look



If you do not see a design you like, contact us for assistance with creating your own design.

CREATE A LASTING FIRST IMPRESSION

Your home is typically the largest single investment you'll ever make. It also says a lot about who you are – your style, your taste, your attention to detail. In many homes today, the garage door is no longer viewed merely as a functional necessity. On the contrary, garage doors are fast becoming prominent design elements of the home's exterior façade, making a strong personal statement while adding significantly to the home's curb appeal.

With Apple Door Systems products, curb appeal begins with attention to every detail. While our doors appear to swing, fold, or slide open, in reality they glide overhead at the touch of a button. So you have the best of both worlds – classic good looks of handcrafted wood construction and the convenience of today's technology.

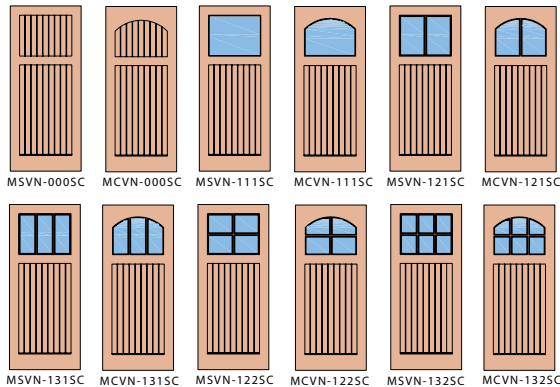
All of our most popular garage door designs are available in our Afton, Kensington, Westham or Westham II product lines. Select the design you want or create your own.



Southwest Look

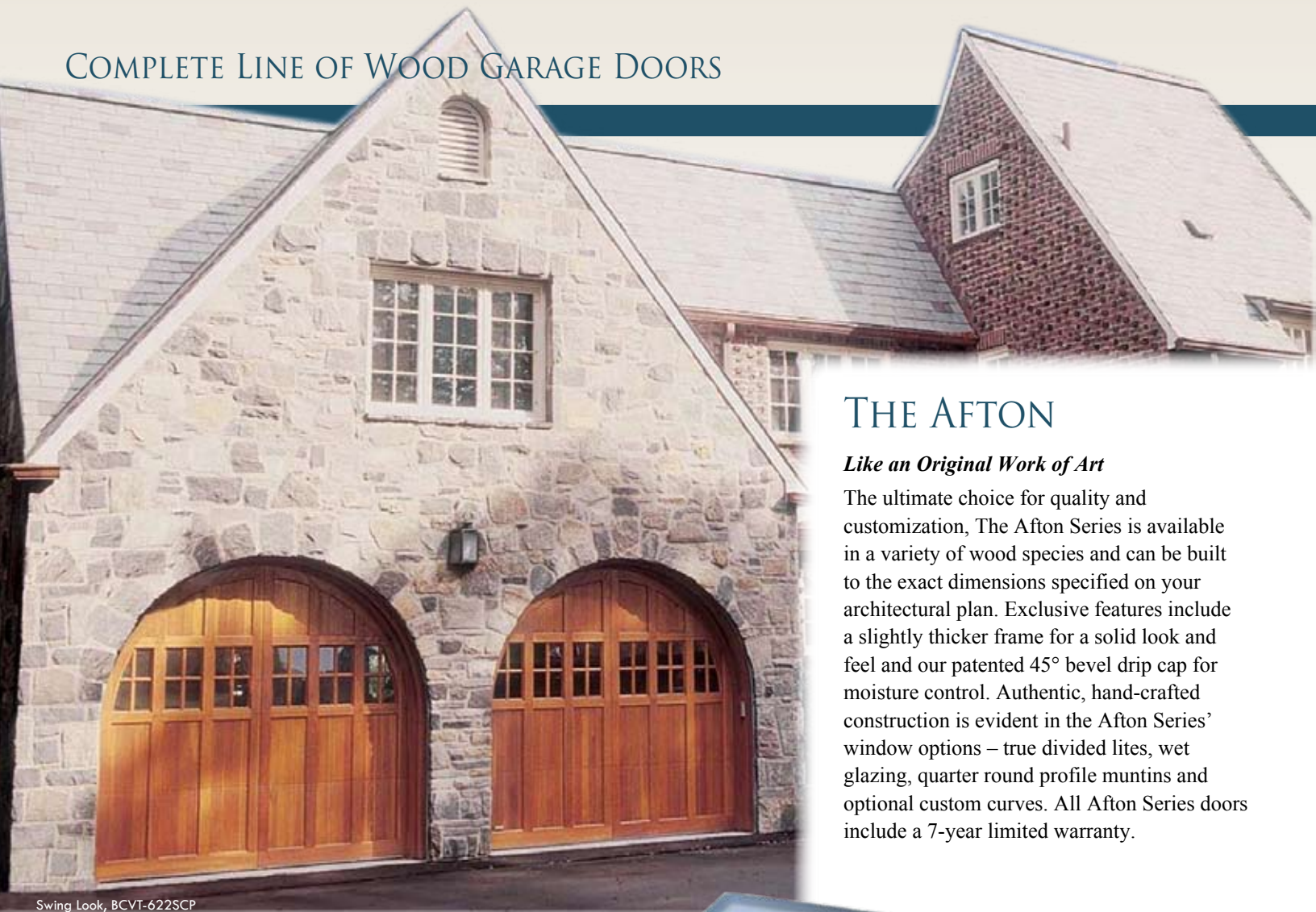


Walk Through



Quad Look, QSVH-8225CG w/ Sim Post

COMPLETE LINE OF WOOD GARAGE DOORS



Swing Look, BCVT-6225CP

THE AFTON

Like an Original Work of Art

The ultimate choice for quality and customization, The Afton Series is available in a variety of wood species and can be built to the exact dimensions specified on your architectural plan. Exclusive features include a slightly thicker frame for a solid look and feel and our patented 45° bevel drip cap for moisture control. Authentic, hand-crafted construction is evident in the Afton Series' window options – true divided lites, wet glazing, quarter round profile muntins and optional custom curves. All Afton Series doors include a 7-year limited warranty.

THE KENSINGTON

Unlimited Design Options

Our Kensington Series offers flexibility in design and options that will enhance the architecture of your home. Choose from an extensive choice of designs or design your own, the Kensington Series offers a high quality solution for your project. All Kensington Series doors include a 5-year limited warranty.



Tri-fold, TCVN-641SCG w/ Sim Post



Slide, SSVT-422SCS

THE WESTHAM

High-End Look Without a High-End Cost

Similar to the Afton and Kensington Series doors, Apple Door Systems Westham Series available in Swing Look, Sliding Look, Tri-Fold Look, Quad Look and Southwest Look. All pre-priced designs are available. Optional profile exterior and interior muntins provide the look of true divided lites. All Westham Series doors are covered by a 2-year limited warranty.

THE WESTHAM II

Paint Grade, Quality Wood Garage Doors at Affordable Prices

Apple Door's Westham II Series of handcrafted, paint-grade wood doors are available in the same pre-priced designs as other Monument Collection doors. Constructed of high quality exterior-grade, solid-core face materials, Westham II doors arrive factory-primed and ready for finishing. All doors include a 1-year limited warranty.



Tri-fold, TSVT-332SCB



PRODUCT CONSTRUCTION DETAIL



Swing Look, Custom



Door Attributes	The Afton
Design Options	Swing Look, Sliding Look, Tri-Fold Look, Quad Look and Southwest Look. All pre-priced designs available.
Frame Construction	Solid, SPF Frame, 1 3/16" thick, with 5mm exterior grade plywood on interior, applied with exterior grade adhesive.
Nominal Section Thickness	Standard Size Doors: Approximately 2 3/4" thick
Trim Board Sizes (Default)	Trim Boards: 8-1/2" bottom rail, 5-1/4" perimeter trim boards, 4-1/2" interior trim boards and bucks.
Trim Board Application Options	X-Buck, A-Buck, V-Buck, Curved bucks and additional horizontal and vertical trim board options available.
Surface Material	4" V-Groove T&G Western Red Cedar, 4" Beaded T&G Western Red Cedar, 6" V-Groove T&G Western Red Cedar, 6" V-Groove T&G Western Red Cedar - Rough Sanded, 4" Flush Face T&G Western Red Cedar and 1/2" Exterior Grade MDF. African Mahogany and other species available.
Surface Material Orientation	Vertical, horizontal and Herringbone
Standard Sizes (Width x Height)	Width: 4' through 18'-6" Height: 6'-6" through 10'-6"
Build Size/Increments	Doors will be built to the size indicated on the customer drawing. Doors are built to the exact size specified.
Default Back Of Door	5 mm Luan Plywood - staple holes to be puttied and sanded. Upgrade to select stainable surface available.
Insulated Construction	1 3/16" Expanded Polystyrene
Window Frame & Muntin (grille) Detail	True divided lite, with all Douglas Fir construction. Standard quarter round profile muntin.
Glass Materials Available	Clear Double Strength, Glacier Glass, Westham II Tint, Tempered and Clear Insulated. Custom glass available.
Wet Glaze Glass To Structure	Windows are wet glazed with acrylic latex.
10° Bevel Under Window	Trim under window has 10° bevel
Curved Top Doors / Standard Radius	Standard drop is 12". Custom curves available.
Drip Cap	There is a patented 45°, beveled drip cap built into the door above the top of the bottom rail.
Wood Grade	Stain Grade Select and Stain Grade Natural for WRC face material
Doorstop / Weather Seal	2-3/8" clear cedar w/vinyl seal
Doorstop Seal Colors	Dark Brown, White, Gray and Tan
Finishing Options	See "Finishing Touches" for all available options
Windload Rating	Most of the standard sizes have a windload rating
Warranty	7 year limited warranty
Powder Coated Hardware Available	Black, dark brown, white or cinnamon brown.
Hardware	15" Radius, 20" Radius, 32" Radius, front low headroom, and rear low headroom.

Swing Look, BCVN-23TSCS



Swing Look, BCVN-232SCG



Tri-Fold Look, TSVN-332SCS



Swing Look, BSVN-242SCB

The Kensington	The Westham	The Westham II
Swing Look, Sliding Look, Tri-Fold Look, Quad Look and Southwest Look. All pre-priced designs available.	Swing Look, Sliding Look, Tri-Fold Look, Quad Look and Southwest Look. All pre-priced designs available.	Swing Look, Sliding Look, Tri-Fold Look, Quad Look and Southwest Look. All pre-priced designs available.
Solid, SPF Frame, 1 3/16" thick, with 5mm exterior grade plywood on interior, applied with exterior grade adhesive.	1" thick, solid, SPF frame, with 1/8" hardboard applied to each side with exterior grade adhesive.	1" thick, solid, SPF frame, with 1/8" hardboard applied to each side with exterior grade adhesive.
Standard Size Doors: Approximately 2 1/4" thick	Standard Size Doors: Approximately 2 1/2" thick	Standard Size Doors: Approximately 2 1/2" thick
Trim Boards: 8-1/2" bottom rail, 5-1/4" perimeter trim boards, 4-1/2" interior trim boards and bucks.	Trim Boards: 5-1/4" bottom board, 5-3/8" perimeter trim boards and 3-1/2" interior trim boards and bucks.	Trim Boards: 5-1/2" bottom rail, 5-1/2" perimeter trim boards and 3-1/2" interior trim boards and bucks.
X-Buck, A-Buck, V-Buck, Curved bucks and additional horizontal and vertical trim board options available.	X-Buck, A-Buck, V-Buck, and additional horizontal and vertical trim board options available.	X-Buck, A-Buck, V-Buck, and additional horizontal and vertical trim board options available.
4" V-Groove T&G Western Red Cedar, 4" Beaded T&G Western Red Cedar, 6" V-Groove T&G Western Red Cedar, 6" V-Groove T&G Western Red Cedar - Rough Sanded, 4" Flush Face T&G Western Red Cedar and 1/2" Exterior Grade MDF. African Mahogany and other species available.	4" V-Groove T&G Western Red Cedar, 4" Beaded T&G Western Red Cedar, 6" V-Groove T&G Western Red Cedar, 6" V-Groove T&G Western Red Cedar - Rough Sanded, 4" Flush Face T&G Western Red Cedar and 1/2" Exterior Grade MDF. Spanish Cedar available.	Exterior grade solid core plywood face materials. Available in 4" or 6" V-Groove or flat surface.
Vertical, horizontal and Herringbone	Vertical only	Vertical only.
Width: 4' through 18'-6" Height: 6'-6" through 10'-6"	Width: 4' through 18'-6" Height: 6'-6" through 10'-6"	Standard Width - 6', 8', 9', 10', 16', 18' Standard Height - 6' 6", 7', 7' 6", 8', 8' 6", 9'
Doors will be built to the size indicated on the customer drawing. Doors are sizeable and are built in 1/4" increments.	Doors will be built to the size indicated on the customer drawing. Doors are sizeable and are built in 1" increments.	Only standard sizes available
5 mm Luan Plywood - staple holes to be puttied and sanded. Upgrade to select stainable surface available.	1/8" hardboard, Factory primed	1/8" hardboard, Factory primed
15/16" Expanded Polystyrene	1" Expanded Polystyrene	1" Expanded Polystyrene
Drop-in window frame work, simulated divided lite, with all Douglas Fir construction. Standard quarter round profile muntin. True divided lite look.	Drop-in window frame work, simulated divided lite, with all western red cedar construction. Optional profile exterior & interior muntins available.	Drop-in window frame work with simulated divided lite.
Clear Double Strength, Glacier Glass, Westham II Tint, Tempered and Clear Insulated. Custom glass available.	Clear Double Strength, Glacier Glass and Clear Insulated	Clear Double Strength and Clear Insulated
Windows are wet glazed with acrylic latex.	Standard doors are not wet glazed. Doors receiving three finish coats at the factory are caulked.	Not available
Trim under window has 10° bevel	Not available	Not available
Standard drop is 12". Other drops available between 4" to 14". Custom curves not available.	Standard drop is 12". Other drops available 4", 6", 8", 10", and 14". Custom curves not available.	Standard drop is 12". Other drops available 4", 6", 8", 10", and 14". Custom curves not available.
There is a patented 45°, beveled drip cap built into the door above the top of the bottom rail.	Rabbetted Filler Strip	Not Available
Stain Grade Select and Stain Grade Natural for WRC face material	Stain Grade Select and Stain Grade Natural for WRC face material	Paint Grade. Factory primed
2-3/8" clear cedar w/vinyl seal	2-3/8" clear cedar w/vinyl seal	No doorstop provided
Dark Brown, White, Gray and Tan	Dark Brown, White, Gray and Tan	No doorstop provided
See "Finishing Touches" for all available options	See "Finishing Touches" for all available options	Paint only
Most of the standard sizes have a windload rating	Most of the standard sizes have a windload rating	Most sizes have a wind load rating
5 year limited warranty	2 year limited warranty	1 year limited warranty
Black, dark brown, white or cinnamon brown.	Not available.	Not available
15" Radius, 20" Radius, 32" Radius, front low headroom, and rear low headroom.	15" Radius, 20" Radius, 32" Radius, front low headroom, and rear low headroom.	15" Radius, 20" Radius, 32" Radius, front low headroom, and rear low headroom.

WINDLOAD APPLICATIONS AND MORE

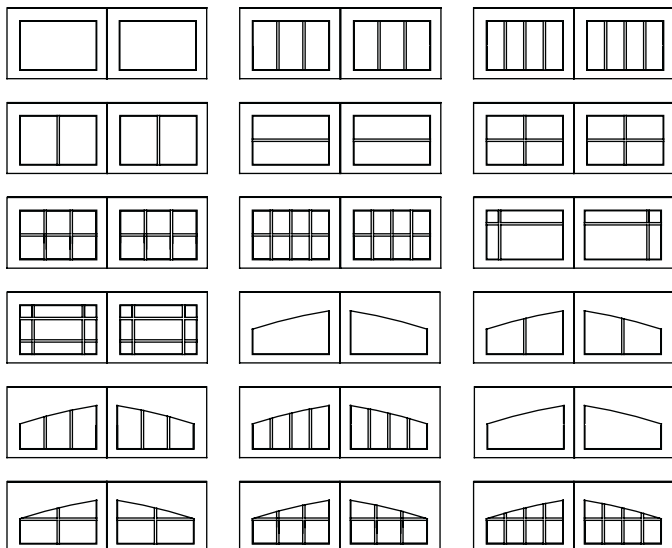
Moisture Control System

As with any wood product, it's important to protect the door from water infiltration, which can lead to rot and decay. Apple Door's Afton and Kensington Series doors feature our exclusive Moisture Control System to help assure your doors will last for years to come. This system includes:

- **No exposed vertical end grain on door bottom.** Horizontal cap board seals off the end grain of the tongue-and-groove surface material, eliminating the absorption of moisture.
- **"Wet" glazed windows.** Each piece of glass is sealed in place by a "wet" bead of sealant.
- **Drip Cap.** A beveled moulding recessed into the surface material along the top edge of the bottom trim board, the drip cap prevents water from pooling on the bottom board and seeping into the door, thus minimizing the possibility of mold or wood rot.
- **Vent Holes.** Holes drilled into each section of the door's interior facilitate the natural drying of moisture within the door caused by temperature and humidity changes. This prevents the damaging build-up of moisture within the door's interior cavity.
- **Beveled trim board.** Located under the lite sections, the trim board sheds water and prevents pooling and potential leakage into the door's interior cavity, again maximizing the life of the door.

Windows

Window Design Options



Windload Applications

When severe weather comes, it's essential that your doors be able to withstand high winds and extreme pressure changes. Apple Door Systems does just that. Beautifully.

We take that beauty one step further and offer custom all-wood garage and entry doors in many different designs that are approved for use in areas where hurricane-force winds are a real threat, from inland tornado prone areas to windborne debris regions such as the Virginia coast.

Windload Ratings *

Design	Wind Speed**	Design Pressure	Width
Windload Rated	90 - 100	+21/-24	9' max.
Windload Rated	90 - 100	+21/-24	18' max. 1 storm post
Windload Rated	90 - 100	+21/-24	10' 6" max.
Windload Hardware Package	110 - 120	+34/-37	9' max.
Windload Hardware Package	110 - 130	+38/-42	18' max. 1 storm post
Windload Hardware Package	100 - 115	+28/-30	10' 6" max.
Windload Hardware Package	90 - 100	+15/-17	18' max. no post
Impact - no glass	130 - 150	+48/-60	9' max.
Impact - no glass	130 - 150	+48/-60	9'-10'6"

* These ratings are for Afton, Kensington, Westham and Westham II Series garage doors.
** These are approximate wind-speed ranges.



Swing Look, BCFI-2425CB

Glass Options

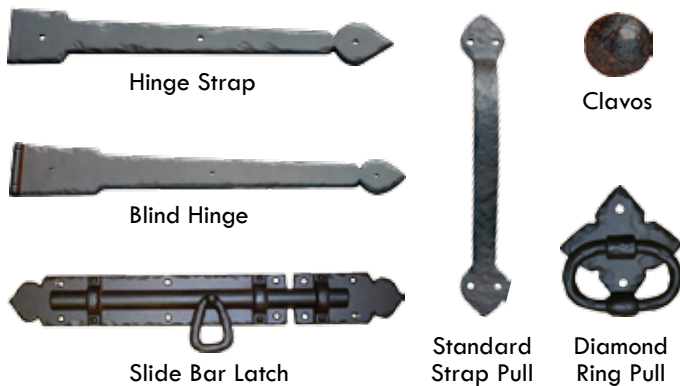
Our standard glass is 1/8" clear double strength. We also offer 1/2" thick insulated glass.

- The 1/8" clear double strength glass is a single pane of glass.
- Optional insulated glass is two panes of 1/8" clear double strength glass that uses a 1/4" aluminum spacer between the two panes. Adhesive is used to hold the pieces together.

FINISHING TOUCHES

Decorative Hardware

Add character to the exterior of your garage doors with Apple Door's authentic looking decorative hardware. Our hardware is cast from durable, lightweight aluminum and coated with black zinc chromate to create the look of wrought iron while retaining superior weather resistance. We also offer hand-forged and stamped steel decorative hardware for our garage doors.



Available Sizes:

Hinge Strap	16", 24"	Standard Strap Pull	12 ³ / ₄ "
Blind Hinge	16", 24"	Clavos	³ / ₄ ", 1 ¹ / ₄ ", 1 ³ / ₄ "
Slide Bar Latch	23 ¹ / ₂ "		

Finishes

Stain

To preserve the natural beauty of our Western Red Cedar garage doors, Apple Door Systems offers factory finishing with a variety of Sikkens® brand stains. We will professionally apply 1, 2, or 3 coats depending on your needs. Our standard color options are shown below.

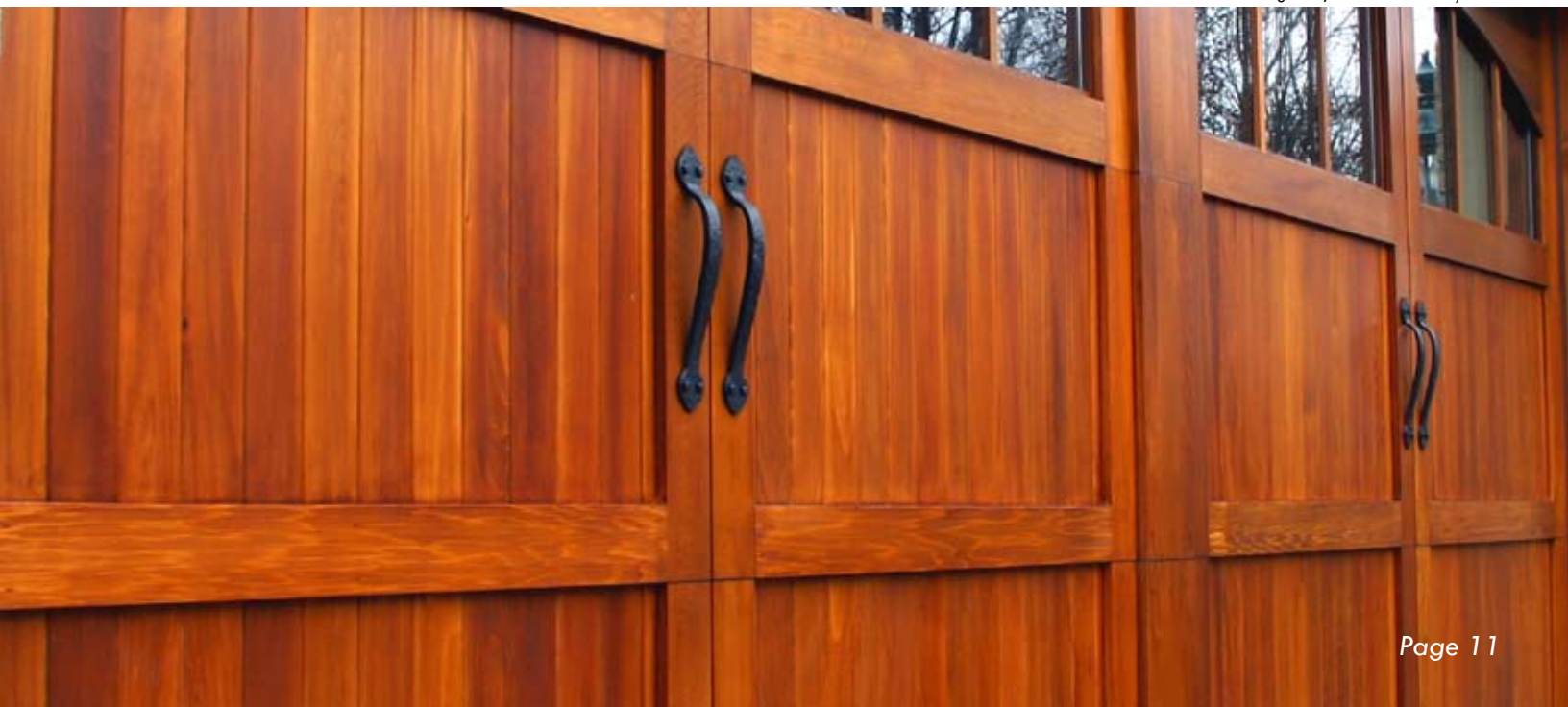


Paint

We will also factory apply 1, 2 or 3 coats of Sherwin Williams® paint. Offered are an Alkyd Primer and a Latex 2nd & 3rd coats. Standard color options are:

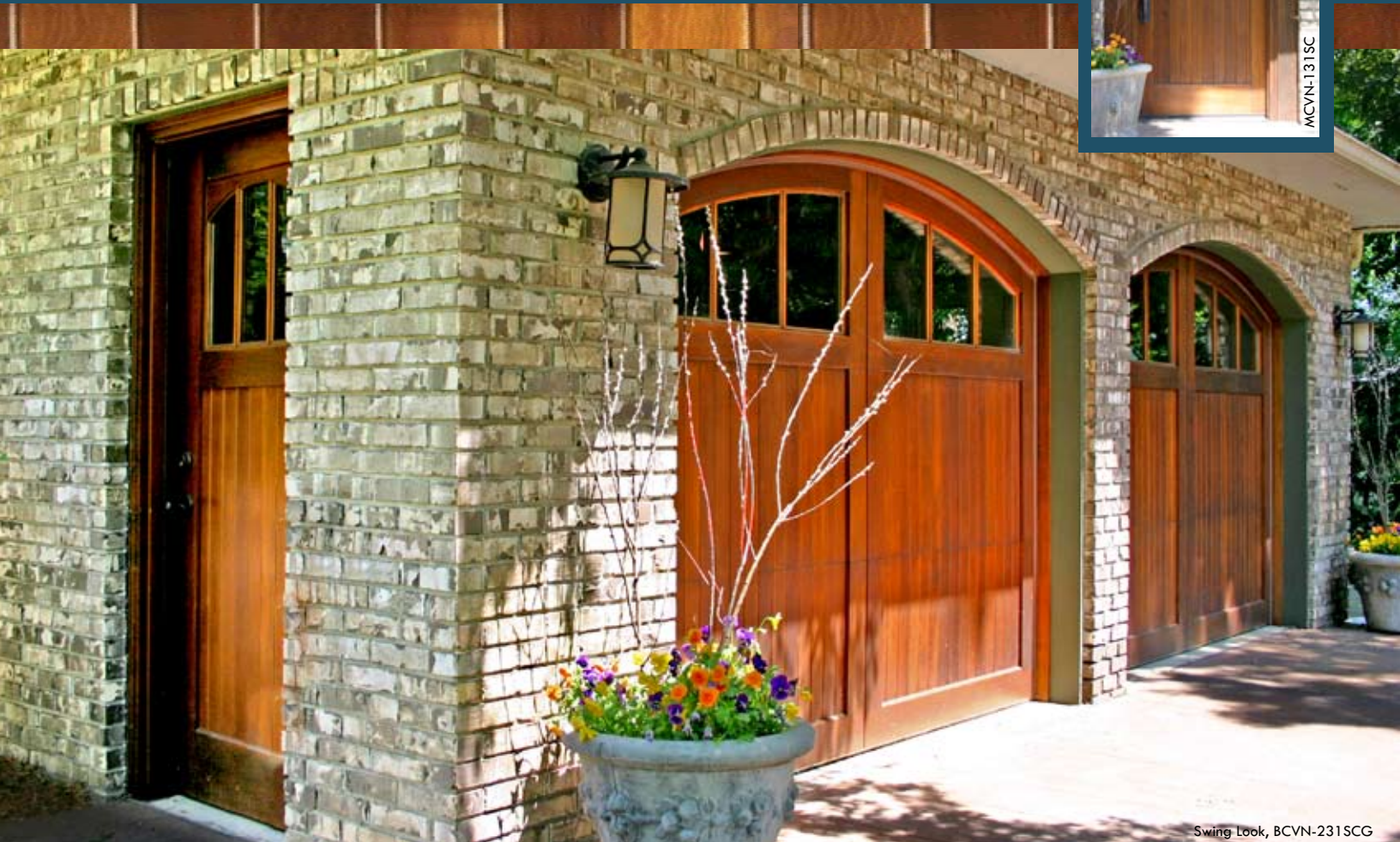
- Primer
 - Alkyd Gray
- Second and third coats:
 - Andersen® White & Sandtone
 - Weathershield® Mist Gray, Painters White & Desert Tan
 - Pella® Tan, Putty, White, Morning Sky Gray & Poplar White
 - Marvin® Pebble Gray, Arctic White, Coconut Cream, Sierra White, French Vanilla, Cumulus Gray, Cadet Gray, and Stone White

Swing Look, BCVH-431SCS w/Sim Post



The Ultimate Finishing Touch...

COMPLEMENTING WALK - THROUGH DOORS



The Monument Collection's complementing walk-through doors match your garage doors' decorative trim boards, window patterns, and surface millwork adding functional architectural integrity to the exterior of your home. Featuring superior craftsmanship in a

robust 2 ¼" thick design. All walk-through doors are pre-hung for easy installation or retrofit. Standard sizes include widths of 32", 36", and 42", and heights of 80", 84", and 96".

VISIT ONE OF OUR SIX LOCATIONS



800.277.3767
www.appledoor.com

© Copyright 2010 Apple Door Systems

Apple Door of Richmond
2700 Pocoshock Blvd.
Richmond, VA 23235
804.674.7774
804.674.4004 fax

Apple Door of Fredericksburg
4727 Jefferson Davis Highway
Fredericksburg, VA 22408
540.898.4700
540.898.4422 fax

Apple Door of Charlottesville
920 Gardens Blvd, Suite 100
Charlottesville, VA 22901
434.979.3997
434.979.3998 fax

Apple Door of Chesapeake
1244 Executive Blvd, Suite A-101
Chesapeake, VA 23320
757.548.2828
757.548.2889 fax

Apple Door of Waynesboro
51 Hutchwood Lane
Waynesboro, VA 22980
540.943.7180
540.943.3919 fax

Apple Door of Williamsburg
1625 Merrimac Trail
Williamsburg, VA 23185
757.229.4118
757.229.3501 fax